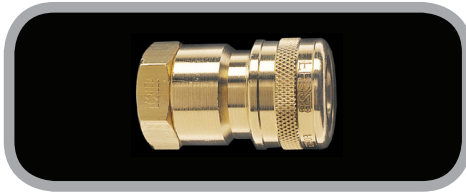


Interchange With Snap-Tite- H & IH Series

FH & FIH Series

TWO WAY VALVED SOCKETS



TWO WAY VALVED PLUGS



Female Thread	Steel Catalog No.	Snap-Tite	Brass Catalog No.	Snap-Tite	Steel Catalog No.	Snap-Tite	Brass Catalog No.	Snap-Tite
1/4 FPT	FHS2F2	VHC4-4F	FHS2F2B	BVHC4-4F	FHP2F2	VHN4-4F	FHP2F2B	BVHN4-4F
3/8 FPT	FHS3F3	VHC6-6F	FHS3F3B	BVHC6-6F	FHP3F3	VHN6-6F	FHP3F3B	BVHN6-6F
1/2 FPT	FHS4F4	VHC8-8F	FHS4F4B	BVHC8-8F	FHP4F4	VHN8-8F	FHP4F4B	BVHN8-8F
Male Thread								
1/4 MPT	FHS2M2	VHC4-4M	FHS2M2B	BVHC4-4M	FHP2M2	VHN4-4M	FHP2M2B	BVHN4-4M
3/8 MPT	FHS3M3	VHC6-6M	FHS3M3B	BVHC6-6M	FHP3M3	VHN6-6M	FHP3M3B	BVHN6-6M
1/2 MPT	FHS4M4	VHC8-8M	FHS4M4B	BVHC8-8M	FHP4M4	VHN8-8M	FHP4M4B	BVHN8-8M

SPECIFICATIONS FH, FIH SERIES

TYPE:

- FH – Two Way Shut-Off and Straight-Thru
- FIH – One Way Shut-Off

INTERCHANGEABILITY:

- FH SERIES interchanges with Snap-Tite "H" Series.
- FIH SERIES interchanges with Snap-Tite "IH" Series.
- Within each series, only sockets and plugs of the same size will couple together.

OPERATION:

- Manual – Socket sleeve must be manually retracted to connect and disconnect.

WORKING PRESSURE

Rated Pressure as defined by ANSI/B93.2 – 1986, based on a 4:1 safety factor and non-shock service.

OPTIONS:

- BL – Locks against accidental disconnect. To connect align ball with slot. After connection, rotate sleeve to lock. To disconnect, realign ball with slot and retract sleeve. To order, prefix BL to socket catalog numbers.

SEAL COMPOUND GUIDE:

- Standard seals are Buna-N.
- See page 20 for optional seals.

DIMENSIONAL DATA:

- Full size layouts available upon request.

FH SERIES, TWO WAY	STEEL		BRASS		FH, STRAIGHT THRU	STEEL		BRASS		FIH, ONE WAY	STEEL	
	Body Size	PSIG	PSI	PSI		Body Size	PSIG	PSI	PSI		Body Size	PSIG
	1/4"	3250	2000		1/4"	3000	3000			1/4"	3000	
	3/8"	2250	1200		3/8"	4000	3500			3/8"	2250	
	1/2"	1800	1200		1/2"	4000	3500			1/2"	2000	

FH & FIH SERIES

The FIH Series sockets & plugs are for pneumatic applications. The FIH sockets have a valve with 360° contact with plug.

FIH SERIES ONE WAY VALVED SOCKETS



FIH & FH SERIES UNVALVED PLUGS



FH SERIES STRAIGHT-THRU SOCKETS, NO VALVING



Female Thread	Steel	Snap-Tite	Steel	Snap-Tite	Brass	Snap-Tite	Steel	Snap-Tite	Brass	Snap-Tite
1/8 FPT			FH21F	PHN4-2F						
1/4 FPT	FIS2F2	VIHC4-4F	FH22F	PHN4-4F	FH22FB	BPHN4-4F	FHS2	PHC4-4F	FHS2B	BPHC4-4F
3/8 FPT	FIS3F3	VIHC6-6F	FH33F	PHN6-6F	FH33FB	BPHN6-6F	FHS3	PHC6-6F	FHS3B	BPHC6-6F
1/2 FPT	FIS4F4	VIHC8-8F	FH44F	PHN8-8F	FH44FB	BPHN8-8F	FHS4	PHC8-8F	FHS4B	BPHC8-8F
Male Thread										
1/4 MPT	FIS2M2	VIHC4-4M	FH22M	PHN4-4M	FH22MB	BPHN4-4M				
3/8 MPT	FIS3M3	VIHC6-6M	FH33M	PHN6-6M	FH33MB	BPHN6-6M				
1/2 MPT	FIS4M4	VIHC8-8M	FH44M	PHN8-8M	FH44MB	BPHN8-8M				