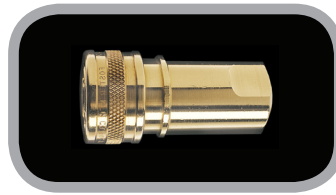


PLUGS



SOCKETS



SOCKET DUST PLUGS



Conforms with ISO 7241-1, Series B

BODY	Thread Size	Steel	Brass	S/S •	Steel	Brass	S/S •	Cat.No.*
1/8"	1/8 FPT	K1S	K1B	K1S/S	H1S	H1B	H1S/S	H1DP
	7/16-20FT ■	K154			H1S4			H1DP4
1/4"	1/4 FPT	K2S	K2B	K2S/S	H2S	H2B	H2S/S	H2DP
	9/16-18FT ■	K2S6			H2S6			H2DP6
3/8"	3/8 FPT	K3S	K3B	K3S/S	H3S	H3B	H3S/S	H3DP
	3/4-16FT ■	K3S8			H3S8			H3DP8
1/2"	1/2 FPT	K4S	K4B	K4S/S	H4S	H4B	H4S/S	H4DP
	7/8-14FT ■	K4S10			H4S10			H4DP10
3/4"	3/4 FPT	K6S	K6B	K6S/S	H6S	H6B	H6S/S	H6DP
	1-1/16-12FT ■	K6S12			H6S12			H6DP12
1"	1FPT	K8S	K8B	K8S/S	H8S	H8B	H8S/S	H8DP
	1-5/16-12FT ■	K8S16			H8S16			H8DP16

■ SAE straight thread O-ring seal boss •303 Stainless Steel H2S & H3S Available with Backup Ring, Suffix BU \* Aluminum

**SPECIFICATIONS FHK SERIES**

**TYPE:**

- FHK, Two Way Shut-Off  
Both socket and plug are sealed at disconnect.

**INTERCHANGEABILITY:**

- Standard industrial interchange design, most widely used in industry. Within each series, only sockets and plugs of the same size will couple together. Conforms with ISO 7241-1, Series B.

**OPERATION:**

- Manual- Socket sleeve must be manually retracted to connect and disconnect.

**SEAL COMPOUND:**

- Standard seals are Buna-N.
- See page 20 for optional seals.

**DIMENSIONAL DATA:**

- Full size layouts available upon request.

**OPTIONS:**

- One way Shut-Off: Suffix VA to either socket or plug catalog number for valve actuator.
- Straight-Thru: Suffix LV to both socket and plug catalog number for less valve.
- BL: Locks against accidental disconnect. To connect, align ball with slot. After connection, rotate sleeve to lock. To disconnect, realign ball with slot and retract sleeve. To order, prefix BL to socket catalog number.

**WORKING PRESSURE**

BODY SIZE	STEEL PSIG	BRASS PSIG	STAINLESS STEEL PSIG
1/8"	4000	3000	3500
1/4"	4000	2700	3700
3/8"	3500	2200	3700
1/2"	2500	2200	4200
3/4"	1600	1500	1600
1"	2000	1500	2000

Vacuum Service: 27" Hg. Maximum

BODY	PERFORMANCE DATA				FLOW
	Air flow – CFM				Oil Flow-GPM MIL-H5606-125°F Pressure Drop-10 PSIG
	100 PSIG		80 PSIG		
	Pressure Drop				
	10 PSIG	5 PSIG	10 PSIG	5 PSIG	
1/8"	22	17	20	15	1.8
1/4"	32	22	29	20	3.6
3/8"	58	42	53	38	6.7
1/2"	130	88	118	80	11.0
3/4"	305	207	277	188	26.3
1"	372	252	338	229	31.8
BODY	PLUG DUST PLUGS*			SOCKET DUST PLUGS*	
1/8"			B1DC		B1DP
1/4"			B2DC		B2DP
3/8"			B3DC		B3DP
1/2"			B4DC		B4DP
3/4"			B6DC		B6DP
1"			B8DC		B8DP

\* Material of Construction: Rubber Color: Blue